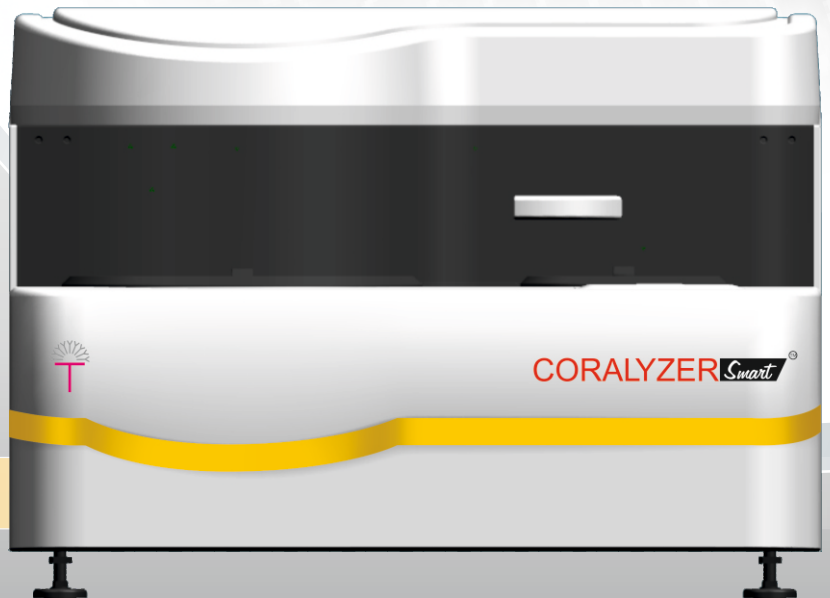




# CORALYZER<sup>Smart</sup><sup>TM</sup>

*The Smart Choice*

- Fully Automatic, Random Access Clinical Chemistry Analyzer with a throughput of 200 Tests/ hour.
- Reusable cuvettes with efficient on-board laundry.
- STAT facility available for all sample positions.
- Excellent On-board refrigeration for reagents.
- Efficient water consumption.

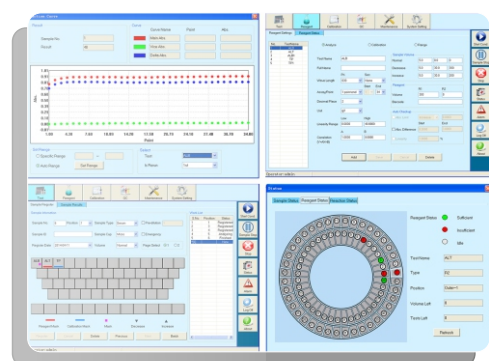
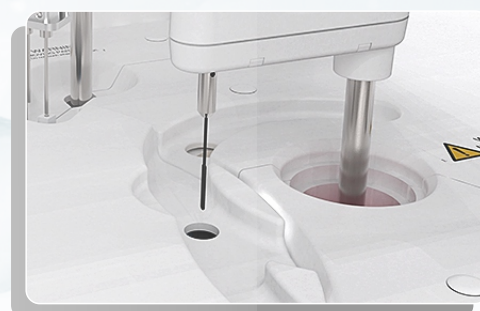


*The change you need...*

# CORALYZER<sup>TM</sup> Smart

## Technical Parameters

<b>Machine type</b>	: Random access Analyzer
<b>Test speed</b>	: Constant 200 tests/hour (mono reagent or double reagent)
<b>Test principle</b>	: Colorimetric method, turbidimetry
<b>Test method</b>	: 1 point end, 2 point end, Fixed-Time, Kinetics
<b>Calibration type</b>	: Linear & nonlinear
<b>Sample cup type</b>	: Micro cup & test tube
<b>Sample volume</b>	: 2-30 $\mu$ L, step by 0.1 $\mu$ L
<b>Reagent volume</b>	: 20-300 $\mu$ L, step by 1 $\mu$ L
<b>Reaction volume</b>	: 150 $\mu$ L -350 $\mu$ L
<b>Reaction time</b>	: 10 minutes
<b>Temperature</b>	: Peltier pad incubation system, reaction temperature ( $37^{\circ} \pm 0.1^{\circ}$ )
<b>Cuvette washing</b>	: 2*6 steps automatic washing
<b>Size</b>	: 745mm x 540mm x 530mm
<b>Chemistry analyzer net weight</b>	: 65Kg
<b>Sound level</b>	: $\leq 40$ dB
<b>Absorbance accuracy</b>	: $0.5 \pm 0.025$ 、 $1.0 \pm 0.07$
<b>Absorbance stability</b>	: $\leq 0.01$
<b>Absorbance repeatability</b>	: $\leq 1.5\%$
<b>Clinical batch precision</b>	: ALT $\leq 3\%$ , Urea $\leq 2.5\%$ , TP $\leq 2\%$



For Further Information Contact

Coral

Clinical Systems

A Division of



**TULIP DIAGNOSTICS (P) LTD.**

a PerkinElmer company

CIN: U85195GA1988PTC005717

Tulip Block, Dr. Antonio Do Rego Bagh, Alto Santacruz, Bambolim Complex Post Office, Goa - 403202, INDIA.  
Tel.: +91 832 2458546-50 Fax : +91 832 2458544 E-mail : sales@tulipgroup.com Website : www.tulipgroup.com