

InnoLab²⁰⁰

Clinical Chemistry Analyzer



Specific, Sensitive and
Simple Systems for Patient Care

Windows based user friendly interface

7.0 inch touch screen LCD

Auto sleep for lamp protection, self-defined stand by time

5 USB port, Ethernet port

Up to 300 tests can be programmed

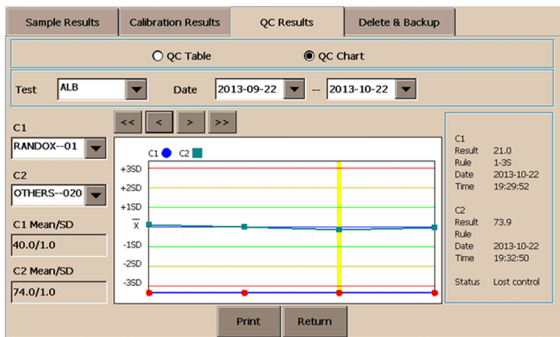
Up to 200000 results storage

Database backup by USB port

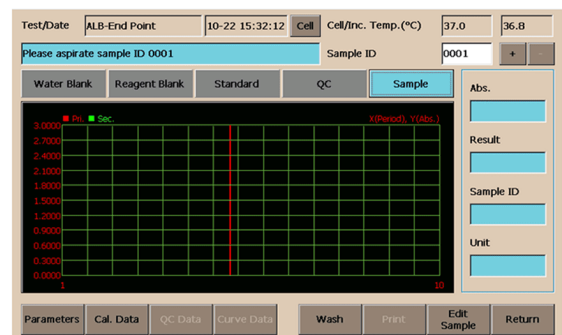
Universal power supply



Clinical Chemistry Analyzer



On- Board QC Chart – Validation and Display of the Levey Jenning plot.



Live Graph – Sample reaction graph online

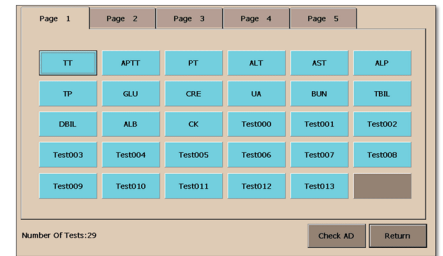
Specific, Sensitive and Simple Systems for Patient Care

User Interface

The input panel can popup automatically when you input characters, numbers in each dialog of software, as the figure below shows. USB mouse and USB keypad will reserve for people who get used to use traditional computer.



Test Menu – Direct Access



Test Menu

Clinical Chemistry - Substrates

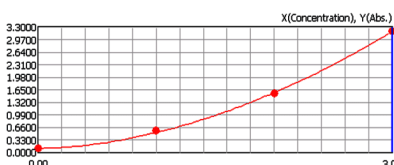
- Albumin
- Bilirubin T&D-DMSO
- Calcium-AIII
- Chloride
- Cholesterol
- HDLc-D
- LDLc-D
- Copper
- Creatinine
- Fructosamine
- Glucose
- HbA1c Enzymatic
- Homocysteine
- Iron FZ
- TIBC
- Lactate
- Magnesium
- Oxalic acid
- Protein U&CSF
- Phospholipids
- Phosphorus
- Total Lipids
- Total Protein
- Triglycerides
- Sodium
- Lithium
- Pottasium
- Urea
- Uric Acid

Clinical Chemistry - Enzymes

- Acid Phosphates
- Alkaline Phosphates
- Amylase
- CHE-Monotest
- CK-NAC
- CK-MB
- γ-GT
- SGPT
- SGOT
- LDH
- Lipase
- Glucose-6PDH

Specific Proteins

- Apo A1
- Apo B
- α-1-ANTITRY
- α-1-AC GLY
- ATHROM-III
- CERULOPLASMIN
- C3
- C4
- HAPTO
- IgA
- IgG
- IgM
- IgE
- PREALBUMIN
- TRF
- ASO Turbi
- RF Turbi
- CRP Turbi
- Lp(a) Turbi
- β-2-Micro Turbi
- Ferritin Turbi
- Microalbumin Turbi



Calibration Curve – Multi Point

Clinical Chemistry Analyzer

Technical Specifications:

Analysis methods:	End Point ,Kinetics, Fixed time, 2 Point Kinetic, Absorbance
Optical :	340, 405, 450, 505, 546, 578, 630nm; 2 extra filters are optional filters
Light source:	6V/10W halogen lamp
Resolution:	0.0001Abs
Photometric range:	0.0000-3.0000 Abs
Stability :	≤0.005 Abs/hour
Carry over:	≤0.5%
Flow cell:	32ul
Temperature control:	Peltier controled: RT, 25°C , 30°C , and 37°C
Memory:	300 programs and 200000 results
Display:	7 inch LCD with touch screen
Printer:	Built-in thermal printer
Interface:	4 USB salve; 1 USB Host and 1 Ethernet Port
Power requirement:	wide power supply: AC100-240V,50/60Hz
Dimension:	400(L)×300(W)×160(H) mm
Weight:	6.0 Kg

